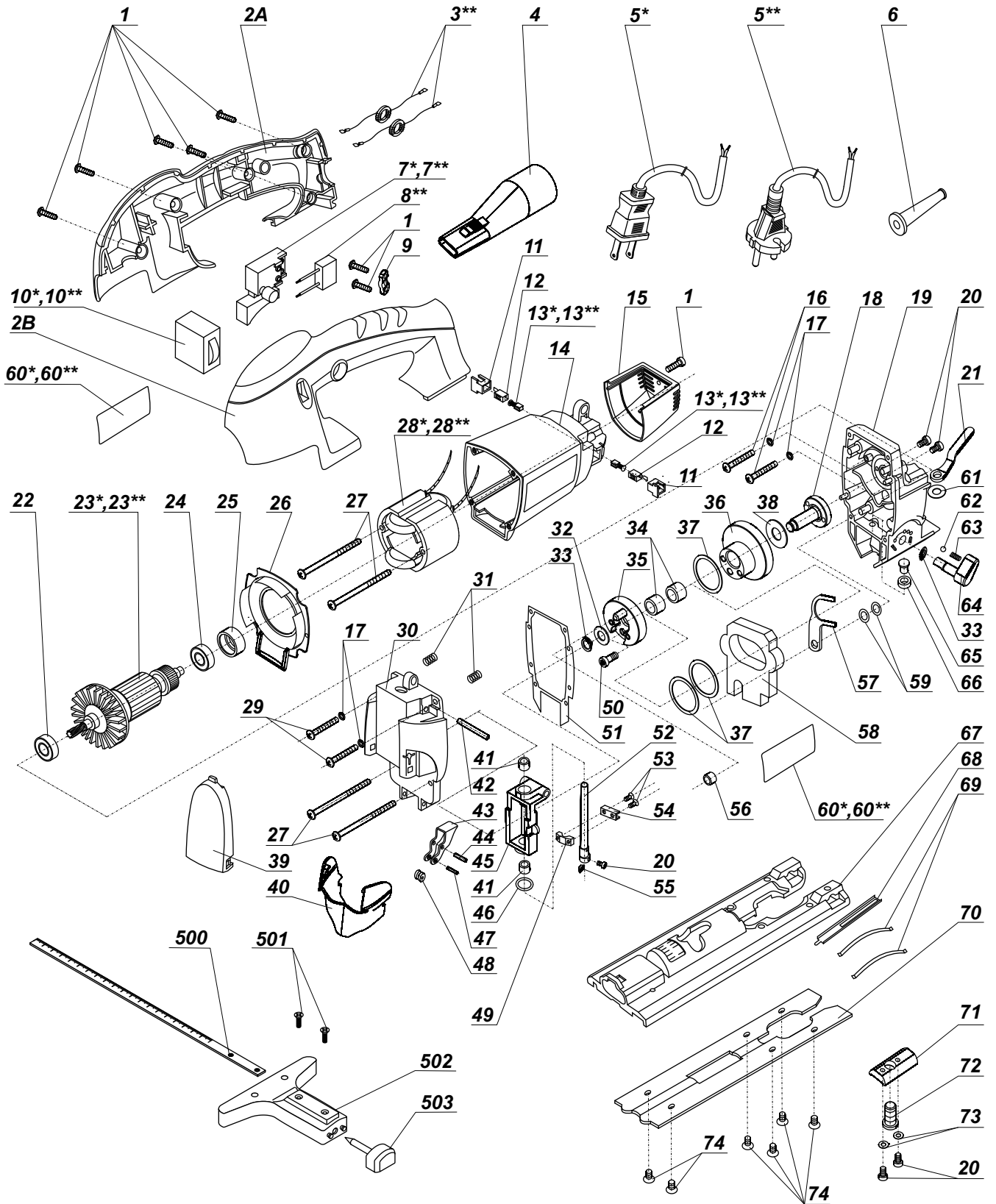


JIG SAW

STS-750 VP

No.:131022 127 V
 No.:121023 230 V



* - 127 V
 ** - 230 V

DWTAug 2003
DIYJIG SAW
STS - 750 VPModel No.: 131022 - 127 V
121023 - 230 V**PRICE LIST OF SPARE PARTS**

Pos.	Part Number	Description (Q-ty)	Description National Language (Q-ty)	Price, USD
1	S-075	Screw ST4x16 (6)		
2A	H-191	Handle A		
2B	H-192	Handle B		
3**	E-007	Inductor $\varnothing 10 \times \varnothing 6 \times 3.5$ (2) 230V		
4	Q-016	Adapter		
5*	1E-001	Cord 127V		
5**	E-001	Cord 230V		
6	M-003	Rubber sleeve		
7*	1C-042	Switch 127V		
7**	C-042	Switch 230V		
8**	E-006	Condenser 0.33 μ F 230V		
9	M-002	Cord clip		
10*	1C-008	VS wheel switch 127V		
10**	C-008	VS wheel switch 230V		
11	J-044	Brush holder (2)		
12	J-045	Brush cover (2)		
13*	1D-005	Carbon brush (2) 127V		
13**	D-005	Carbon brush (2) 230V		
14	H-193	Housing		
15	H-194	Back cover		
16	S-083	Screw ST4x35 (2)		
17	S-023	Spring washer $\varnothing 4$ (2)		
18	K-127	Spindle		
19	G-068	Gear housing		
20	S-208	Inner hexagon screw M4x8 (5)		
21	N-207	Lock level		
22	O-023	Ball bearing 609.RS		
23*	1A-060	Armature 127V		
23**	A-060	Armature 230V		
24	O-002	Ball bearing 608.Z		
25	M-007	Bearing bush $\varnothing 25 \times \varnothing 22 \times 9$		
26	I-084	Guide wind circle		
27	S-087	Screw ST4x65 (4)		
28*	1B-056	Stator 127V		
28**	B-056	Stator 230V		
29	S-334	Screw M4x16 (2)		
30	G-069	Gear housing cover		
31	R-139	Spring $\varnothing 8 \times 10$ (2)		
32	S-226	Washer $\varnothing 8$		
33	S-096	Circlip for shaft $\varnothing 8$ (2)		
34	O-040	Needle bearing HK101410 (2)		
35	K-128	Weight holder		
36	F-076	Big gear		
37	S-340	Washer $\varnothing 27 \times \varnothing 33 \times 0,7$ (3)		
38	S-223	Washer $\varnothing 10 \times \varnothing 25 \times 2$		
39	H-195	Laser cover		
40	P-064	Guard cover		
41	O-068	Bronze bearing $\varnothing 8 \times \varnothing 12 \times 10$ (2)		
42	L-174	Pin $\varnothing 6 \times 47$		
43	L-175	Pendulum supporter		
44	L-176	Pin for pendulum		
45	N-208	Plunger holder		
46	M-225	"O"- ring $\varnothing 8 \times \varnothing 12$		
47	L-177	Pin for roller		

48	P-065	Roller for blade		
49	N-209	Connector holder		
50	S-046	Inner hexagon screw M4x12		
51	M-226	Gasket		
52	K-129	Plunger		
53	S-290	Sunk screw M4x12 (2)		
54	N-210	Connector		
55	M-227	Blade holder		
56	O-041	Needle bearing HK081208		
57	N-211	Orbital cam		
58	N-212	Counterweight		
59	S-153	Washer Ø6 (2)		
60*	1T-144	Brand label 127V		
60**	T-144	Brand label 230V		
61	S-005	Washer Ø10		
62	R-002	Steel ball Ø4		
63	R-044	Spring Ø5x10		
64	N-213	Change knob		
65	L-178	Orbital pin Ø6		
66	M-228	Felt Ø6xØ12		
67	N-214	Base		
68	N-215	Blade set holder		
69	N-216	Spacer (2)		
70	N-217	Subbase		
71	N-218	Base locker		
72	S-051	Screw M10x24		
73	S-001	Washer Ø4 (2)		
74	S-273	Sunk screw M4x8 (6)		
500	Q-086	Ruler		
501	S-030	Sunk screw M4x6		
502	Q-087	Slide guide		
503	Q-088	Alignment pin		

