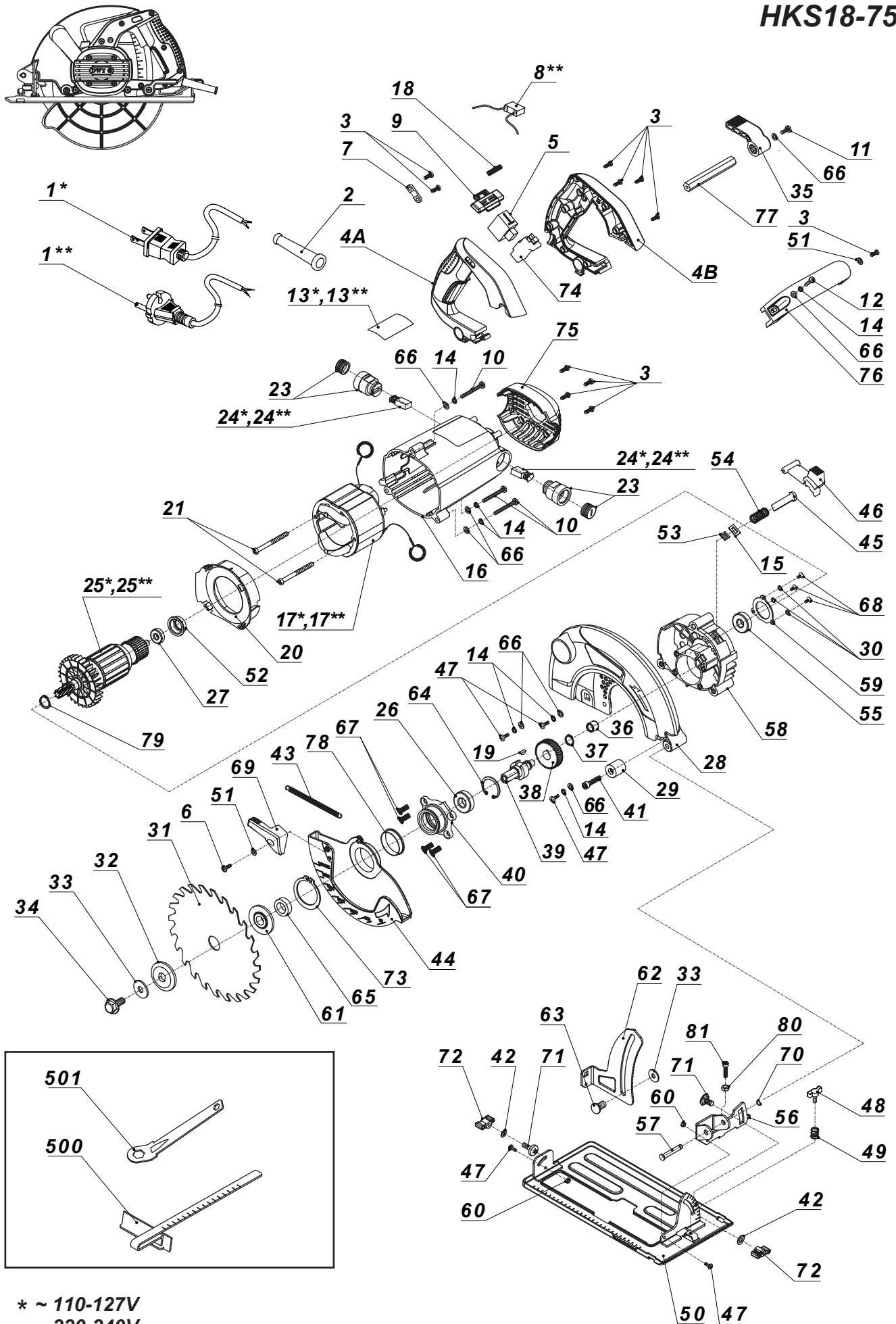


# HKS18-75



\* ~ 110-127V  
 \*\* ~ 220-240V

## PRICE LIST OF SPARE PARTS

| Pos. | Part Number | Description (Q-ty)                           | Description National Language (Q-ty) | Price, USD |
|------|-------------|--|--------------------------------------|------------|
| 1*   | 1E-003      | Cord 127 V                                   |                                      |            |
| 1**  | E-003       | Cord 230V                                    |                                      |            |
| 2    | M-003       | Rubber sleeve                                |                                      |            |
| 3    | S-074       | Screw ST4x14 (11)                            |                                      |            |
| 4A   | H-154       | Handle A                                     |                                      |            |
| 4B   | H-155       | Handle B                                     |                                      |            |
| 5    | C-038       | Switch                                       |                                      |            |
| 6    | S-100       | Screw M4x10                                  |                                      |            |
| 7    | M-002       | Cord clip                                    |                                      |            |
| 8**  | E-006       | Condenser 0.33 $\mu$ F 230V                  |                                      |            |
| 9    | I-059       | Block button                                 |                                      |            |
| 10   | S-042       | Screw M5x38 (3)                              |                                      |            |
| 11   | S-247       | Screw M5x12                                  |                                      |            |
| 12   | S-040       | Screw M5x18                                  |                                      |            |
| 13*  | 1T-124      | Brand label 127 V (HKS18-75)                 |                                      |            |
| 13** | T-124       | Brand label 230 V (HKS18-75)                 |                                      |            |
| 14   | S-024       | Spring washer $\varnothing$ 5 (4)            |                                      |            |
| 15   | S-278       | Square washer                                |                                      |            |
| 16   | H-157       | Housing                                      |                                      |            |
| 17*  | 1B-050      | Stator 127V                                  |                                      |            |
| 17** | B-050       | Stator 230V                                  |                                      |            |
| 18   | R-113       | Spring $\varnothing$ 7x $\varnothing$ 0,7x37 |                                      |            |
| 19   | R-017       | Key 4x5x13                                   |                                      |            |
| 20   | I-061       | Guide wind circle                            |                                      |            |
| 21   | S-279       | Screw ST5x70 (2)                             |                                      |            |
| 23   | J-022       | Brush holder with cap (2)                    |                                      |            |
| 24*  | 1D-012      | Carbon brush (2) 127V                        |                                      |            |
| 24** | D-012       | Carbon brush (2) 230V                        |                                      |            |
| 25*  | 1A-056      | Armature 127V                                |                                      |            |
| 25** | A-056       | Armature 230V                                |                                      |            |
| 26   | O-011       | Ball bearing 6003.RS                         |                                      |            |
| 27   | O-023       | Ball bearing 609.RS                          |                                      |            |
| 28   | P-050       | Head cover(HKS18-75)                         |                                      |            |
| 29   | L-125       | Rubber block                                 |                                      |            |
| 30   | S-023       | Spring washer $\varnothing$ 4 (3)            |                                      |            |
| 31   | Accessories | Blade (HKS82-75)                             |                                      |            |
| 32   | M-159       | Outer flange                                 |                                      |            |
| 33   | S-280       | Washer $\varnothing$ 8x24x2 (2)              |                                      |            |
| 34   | S-281       | Flange bolt M8x18                            |                                      |            |
| 35   | L-127       | Depth spanner                                |                                      |            |
| 36   | O-055       | Needle bearing HK 101610                     |                                      |            |
| 37   | S-289       | Circlip for shaft $\varnothing$ 14           |                                      |            |
| 38   | F-063       | Gear   |                                      |            |
| 39   | K-105       | Spindle                                      |                                      |            |
| 40   | K-107       | Bearing seat                                 |                                      |            |
| 41   | S-041       | Screw M5x25                                  |                                      |            |
| 42   | S-169       | Washer $\varnothing$ 6 (2)                   |                                      |            |
| 43   | R-103       | Tension spring $\varnothing$ 5x120           |                                      |            |
| 43   | R-110       | Tension spring $\varnothing$ 5x135           |                                      |            |
| 44   | P-054       | Active guard(HKS18-75)                       |                                      |            |
| 45   | L-139       | Spindle lock pin                             |                                      |            |
| 46   | I-062       | Lock button                                  |                                      |            |
| 47   | S-039       | Screw M5x16 (5)                              |                                      |            |

|     |       |                          |  |  |
|-----|-------|--------------------------|--|--|
| 48  | S-283 | Wing screw M6x14         |  |  |
| 49  | R-108 | Spring Ø9x16x0,7         |  |  |
| 50  | N-163 | Base (HKS18-75)          |  |  |
| 51  | S-001 | Washer Ø4 (2)            |  |  |
| 52  | M-166 | Bearing bush Ø27Xø24x7,5 |  |  |
| 53  | M-160 | Felt ring                |  |  |
| 54  | R-112 | Spring Ø 11,3x42x1,0     |  |  |
| 55  | O-010 | Ball bearing 6002.RS     |  |  |
| 56  | L-131 | Angle guide              |  |  |
| 57  | L-133 | Link pin Ø8x49           |  |  |
| 58  | G-061 | Gear box                 |  |  |
| 59  | M-162 | Bearing cover            |  |  |
| 60  | S-149 | Nut M5 (2)               |  |  |
| 61  | M-164 | Inner flange             |  |  |
| 62  | L-136 | Depth guide(HKS18-75)    |  |  |
| 63  | S-284 | Special screw M8x18      |  |  |
| 64  | S-114 | Circlip for hole Ø35     |  |  |
| 65  | R-111 | Orientation ring         |  |  |
| 66  | S-004 | Washer Ø5 (7)            |  |  |
| 67  | S-285 | Sunk screw M5x12 (4)     |  |  |
| 68  | S-031 | Screw M4x8(3)            |  |  |
| 69  | I-063 | Active guard lever       |  |  |
| 70  | S-096 | Circlip for shaft Ø8     |  |  |
| 71  | S-286 | Special screw M6x10(2)   |  |  |
| 72  | S-201 | Wing nut M6 (2)          |  |  |
| 73  | S-288 | Circlip for shaft Ø42    |  |  |
| 74  | I-064 | Switch button            |  |  |
| 75  | H-158 | Rear cover               |  |  |
| 76  | Q-096 | Handle                   |  |  |
| 77  | N-165 | Rod                      |  |  |
| 78  | M-165 | Sleeve                   |  |  |
| 79  | S-097 | Circlip for shaft Ø15    |  |  |
| 80  | S-150 | Nut M4                   |  |  |
| 81  | S-046 | Inner hex.screw M4x10    |  |  |
| 500 | Q-098 | Fence                    |  |  |
| 501 | Q100  | Spanner                  |  |  |